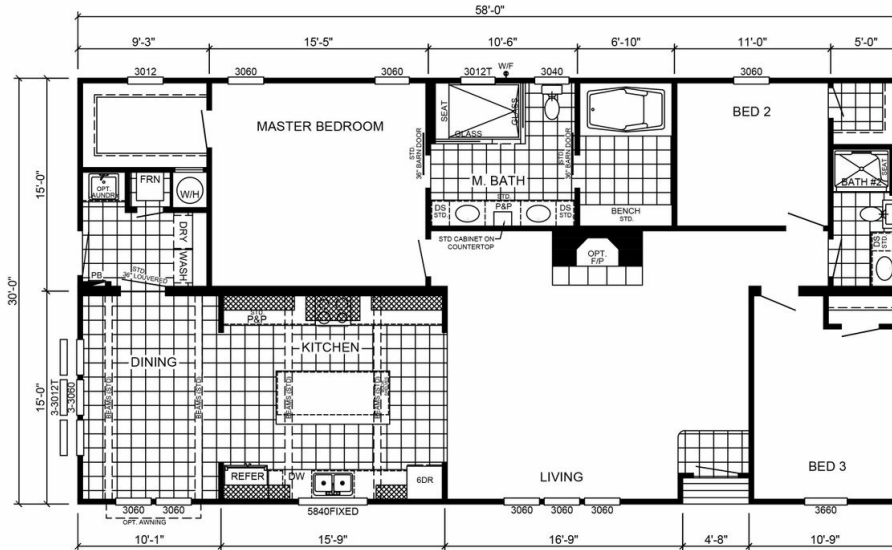




ESTATES SERIES EST-1011

58' x 32'
APPROX: 1731 SQ. FT. (LIVING)
9 SQ. FT. (PORCH)



#2 THE ABIGAIL Model number: 43EST32583AH19

3 beds • 2 baths • 1856 sq.ft. • 32' width • 58' depth

Our home building facilities invest in continuous product and process improvements. Plans, dimensions, features, materials, specifications and availability are subject to change without notice or obligation. Renderings and floor plans are representative likenesses of our homes and may differ from the actual homes. We invite you to tour a Home Center near you and inspect the highest value in quality housing available or call (931) 456-5073 to speak with a Home Consultant. Copyright 2017, CMH. All rights reserved.

<https://www.claytonhomesofcrossville.com>

CLAYTON HOMES-
CROSSVILLE

1340 WEST AVENUE
CROSSVILLE, TN 38555

Monday - Thursday: 9am - 7pm
Friday: 9am - 6pm
Saturday: 9am - 5pm
Sunday: Closed

(931) 456-5073